

3
BED

Opportunity for First Time Buyers - Stunning Views

10E, Rowe Avenue, Peacehaven, BN10 7JD



Price £339,950

Freehold

phillipmann
we do more

www.phillipmann.com

10E Rowe Avenue, BN10 7JD
 Approximate Gross Internal Floor Area = 67.26 sq m / 724 sq ft

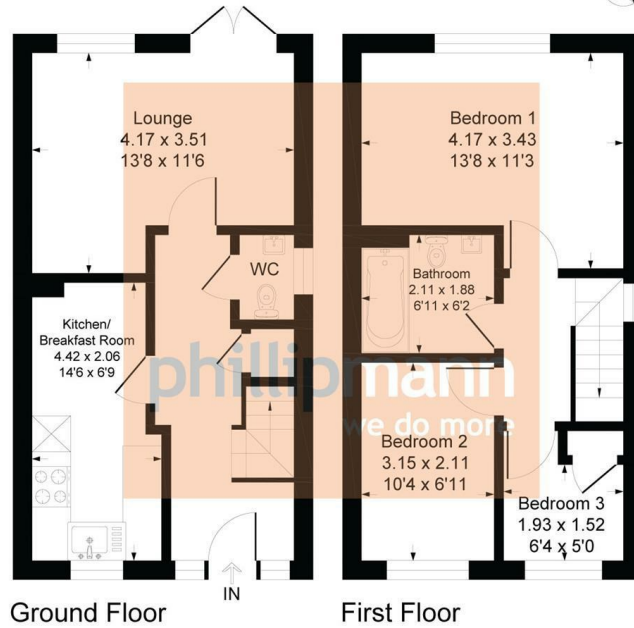


Illustration for identification purposes only, measurements are approximate, not to scale

inbrief...

We are pleased to offer for sale this centrally located semi detached house within close proximity to local shops, main bus routes to Brighton/Eastbourne and a range of schools. Situated on the South side of the Coast Road the property also boasts some fabulous views across The Dell and of the English Channel. Furthermore cliff top walks and access to the beach are also close by.

As you approach the property, ample on street parking is available close by. A covered open porch leads into the entrance hall which features an under stair storage and cloakroom w/c, stairs to first floor and affords access to all ground floor accommodation.

The lounge lies to the rear of the property and here you will find plenty of space for all of your soft furnishings and associated furniture. A window and double doors overlook and afford access to the landscaped rear garden. Outside you will find a west facing rear garden which consists of being mainly artificial lawn with a raised flower beds.

Close by is the modern kitchen / breakfast room which has a great range of matching cupboards, drawers and work surfaces. You will also find numerous integrated appliances and space for a bistro table with associated chairs. A window above the sink provides beautiful views to front.

Upstairs are three bedrooms, two overlook the front thus having some superb views. The master bedroom is positioned to the rear and is a very generous and has space for all free standing furniture. Completing the accommodation is the white fitted bathroom suite which incorporates a 'P' shaped shower/bath, WC, inset basin as well as hatch to loft space.

Viewings Advised



EPC - C

Council Tax Band - C

moreinfo...



Phillip Mann Peacehaven Office

226-230 South Coast Road, Peacehaven, BN10 8JR
 01273 586622

To see more details on this & all our homes go to
www.phillipmann.com